



[www.schmidt-edelstahl.de](http://www.schmidt-edelstahl.de)

■ WE SHAPE  
**STEEL.**

Made in Germany

**SCHMIDT** EDELSTAHL  
GmbH





**Schmidt Edelstahl offers over 30 years of experience in the fields of pattern-embossed and pattern-rolled stainless steel surfaces.**

Our well-stocked stainless steel warehouse not only has the patterns and formats you know, but also other special surfaces such as coloured, titanium-coated and glass-particle blasted sheets. In addition, we can also deliver a number of patterns as coils or fixed

cuts, according to your needs. Our central location in North Rhine-Westphalia helps us to guarantee timely delivery with our own fleet of vehicles.

Our comprehensive shipping organisation allows us to make these sheets available on the growing European market.





# ■ All from a single source



The combination of powerful partners and our modern machinery makes it possible for us to turn stainless steel sheets into almost every shape technically possible.

Our design team takes your ideas from initial drawings to the finished product. Short distances and our own fleet of vehicles allow us to react quickly to your needs.

Whether for individual pieces, limited runs or entire façades:

**Schmidt Edelstahl is able to provide you with one-stop service.**



# Plan with us



As a specialist for stainless steel surfaces, our patterns will open you up to new perspectives and creativity for sophisticated architecture. For years, **Schmidt Edelstahl** has been developing object surfaces in collaboration with architects, builders and planners.

Our surfaces also offer a range of possibilities for high-end industrial design, both indoors and out.

Take advantage of our many years of experience working with materials and the development of new surfaces.

**Avoid planning errors and contact us in time.**





# References



**OTIS**



Schindler



Mercedes-Benz



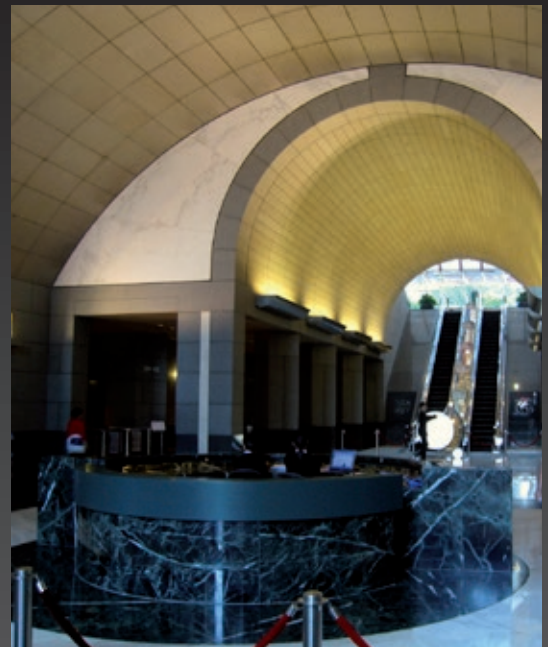
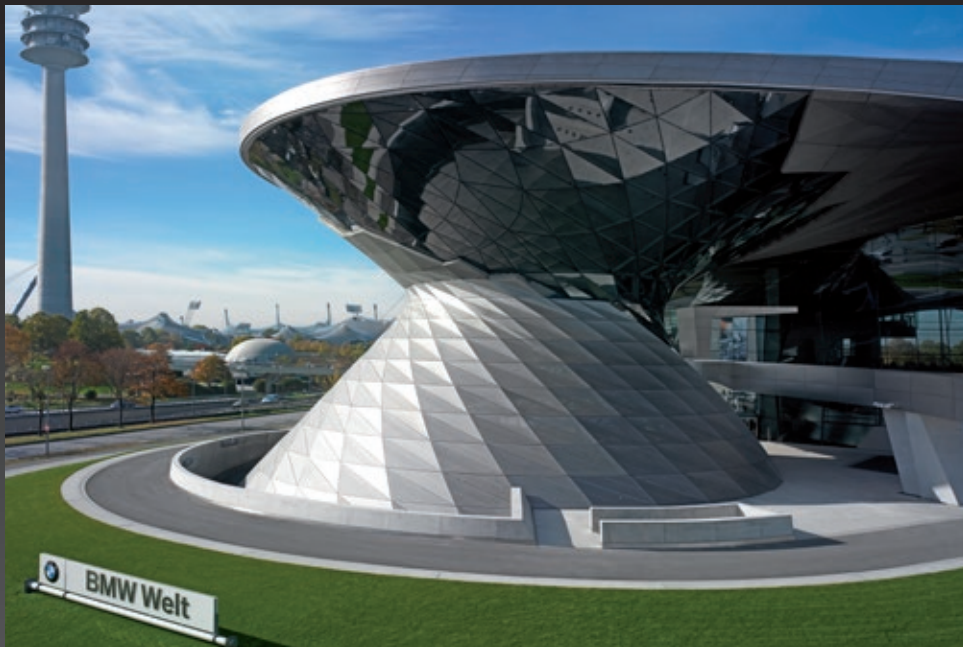
ThyssenKrupp



Imtech Arena



vodafone



# References



Cologne Bonn Airport



DAIMLERCHRYSLER

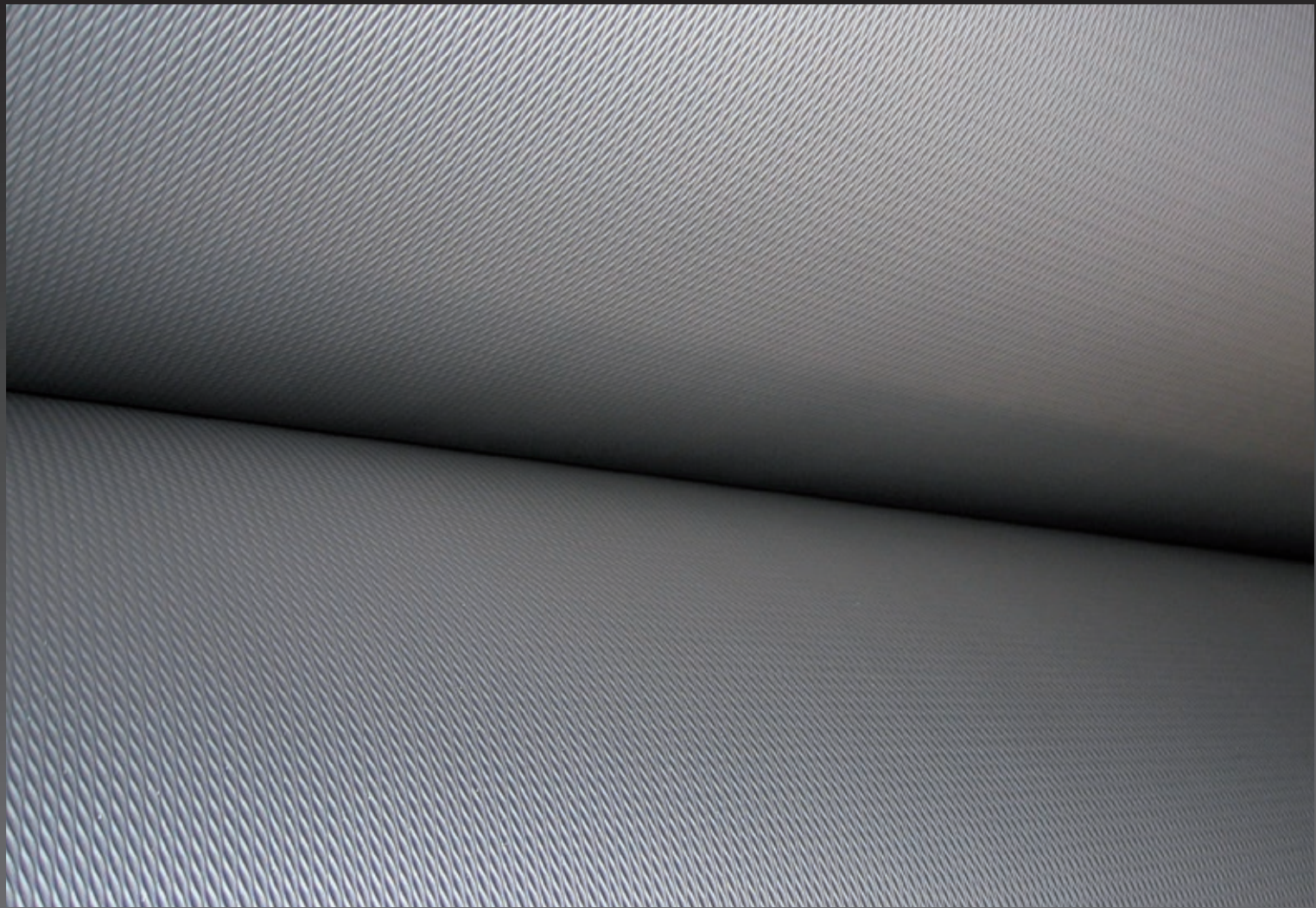






# References

- Copenhagen Subway  
**(perforated sheets)**
- Bank of China  
**(HP-8)**
- Plantation Place London  
**(5WL)**
- Haymarket Newcastle  
**(K-280)**
- Hamburg U-Bahn  
**(5WL)**
- Hamburg Speicherstadt  
**(coils)**
- Mercedes-Benz trade fair booths  
Detroit, Geneva, Tokyo, Istanbul
- BMW Welt in Munich  
**(SE-63)**
- Oslo Airport Shop Systems  
**(KK-64)**
- IKEA Eindhoven  
**(TB-1)**
- Vodafone Ratingen  
**(diamond-shaped façade)**
- Lufthansa Counter Frankfurt  
**(glass beads)**
- Schwäbischer Verlag Ravensburg  
**(KK-64)**
- Brauerei Hase Augsburg  
**(TB-1)**
- ADIDAS Laces Herzogenaurach  
**(KK-64)**
- MPI Frankfurt  
**(SE-25)**
- Daimler Zuffenhausen  
**(4539-2E)**
- Frankfurt Fraport  
**(HP-8)**
- Airport Cologne-Bonn  
**(perforated sheets)**
- HSV Imtech Arena  
**(5WL)**
- Leipzig Airport taxiway  
**(TB-1)**
- Vantan Airport Helsinki  
**(K-280 special grinding).**
- Daewo Center Warsaw  
**(SE-63 glass beads)**
- P&C Düsseldorf  
**(SE-63)**



# Pattern Rollers

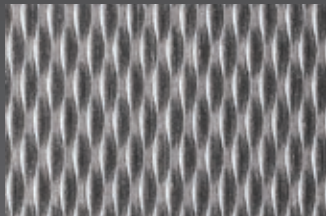


**We offer experience & innovation in the sector of pattern-rolled and pattern-embossed stainless steel surfaces.**

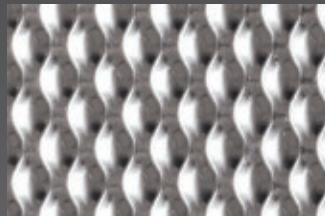
With our own rolling mill • **site in Germany** •, we can guarantee short production times and timely delivery with our own fleet of vehicles, even for fixed sizes through decoiling installations (6000 x 1500mm).

With its 21 castor-levelling-machine, our rolling mill meets the the latest quality standards and is certified per DIN EN ISO 9001 for its being consistently replicable.

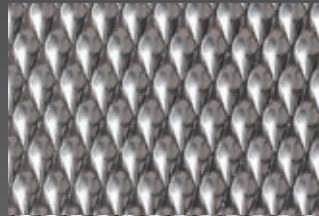
Our brushing & grinding equipment allows us to produce consistent surface finishes designed to replicate the desired appearance.



**Pattern:** SE-5WL  
**Process:** ba or brushed



**Pattern:** SE-6WL  
**Process:** ba or brushed



**Pattern:** SE-7WL  
**Process:** ba or brushed

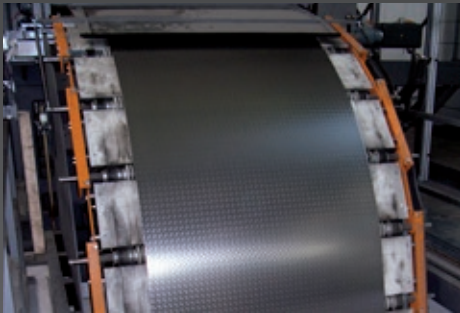
- maximum length 6000 mm
- maximum width "SE-5" **1500 mm**
- maximum width "SE-6" **1500 mm**
- maximum width "SE-7" **1500 mm**
- thicknesses of 0.5-2.0 mm  
SE-6WL up to 3 mm available







# ■ Fixed cuts from the coil



We also offer all common embossed patterns, e.g., square, rhombus, linen or leather, as fixed cuts from the coil. Through our optimized machining process, we can also offer short-term delivery times within 8 working days.

Production of small coils is also no problem. Just contact us, we will be glad to help you.

- maximum weight 20 tonnes
- maximum length 8000 mm
- maximum width 1500 mm
- thicknesses of 0.5-3.0 mm (depending on choice of pattern)



# ■ Circular marbling SE-71



Schmidt Edelstahl offers you several production units for the well-known popular SE 71 pattern, ensuring short delivery times and avoiding delays.

Our newest automatic system lets us produce up to 2000 mm width with a variety of diameters (30/40/50/60 mm) and track grindings, thus enabling new designs.

- maximum length **6000 mm**
- maximum width **2000 mm**
- thicknesses of 0.6-4.0 mm  
(other thicknesses upon request)





# Slip-resistant surfaces

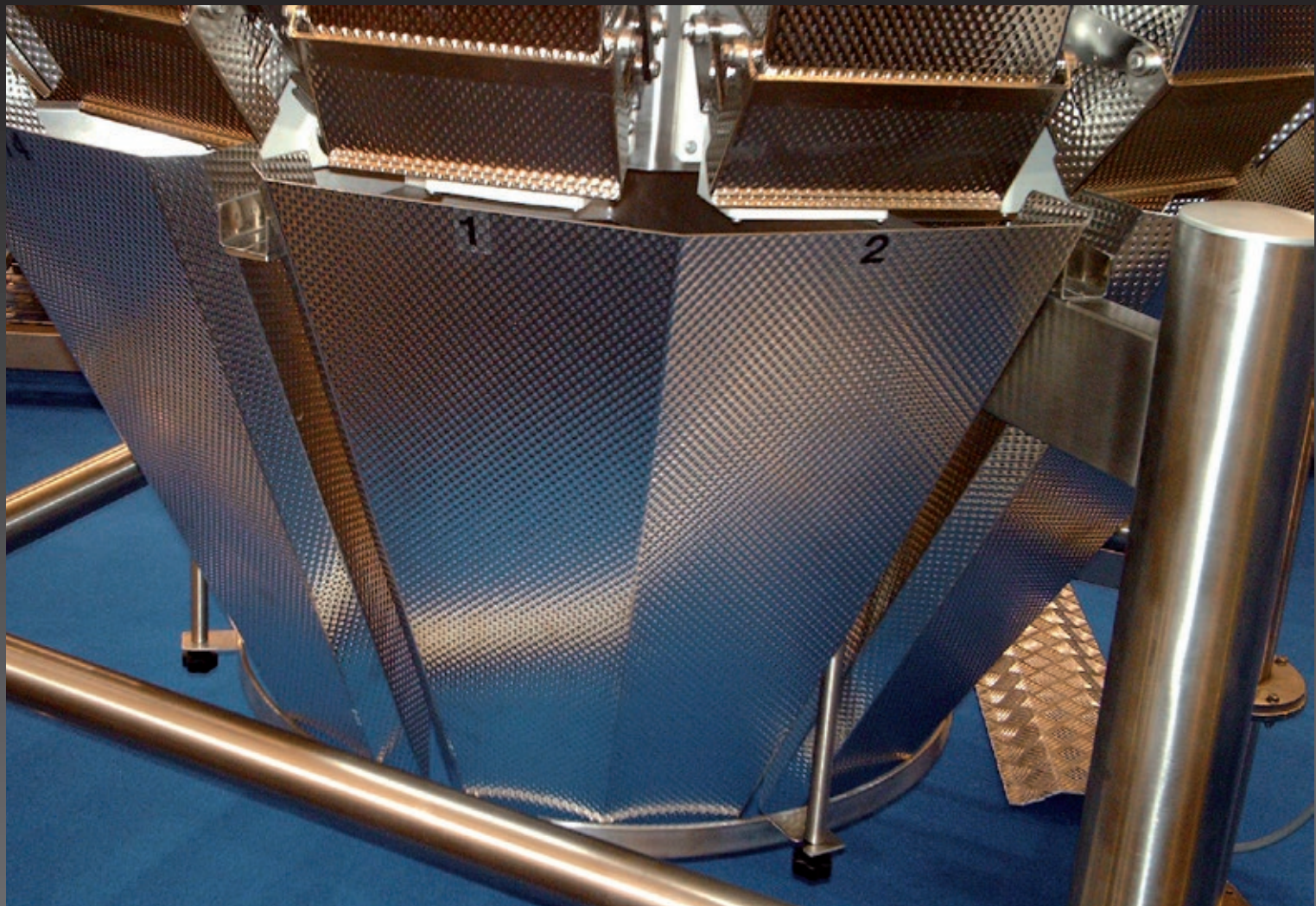
## German certificates R10-R13



According to the statistical records of accident insurance companies, tripping, slipping and falling have been the major causes of work-related accidents for years. Slipping accidents are often caused by the material and surface structure of the floor covering and the degree of contamination by substances that enhance slipperiness. Both the Workplace Ordinance and the UVV "General Regulations" (GUV-V A1, previously GUV 0.1) require that floors be slip-resistant. They must also be easy to clean. This applies to workspaces,

cold storage rooms, warehouses, machinery and ancillary spaces, to the extent that it is necessary and operationally possible for safety or health reasons.

- 0.80 - 3.00 mm (sample range)
- 0.80 - 20.00 mm (normal range)
- max. length **6000 mm**
- max. width **2000 mm** (depending on pattern)

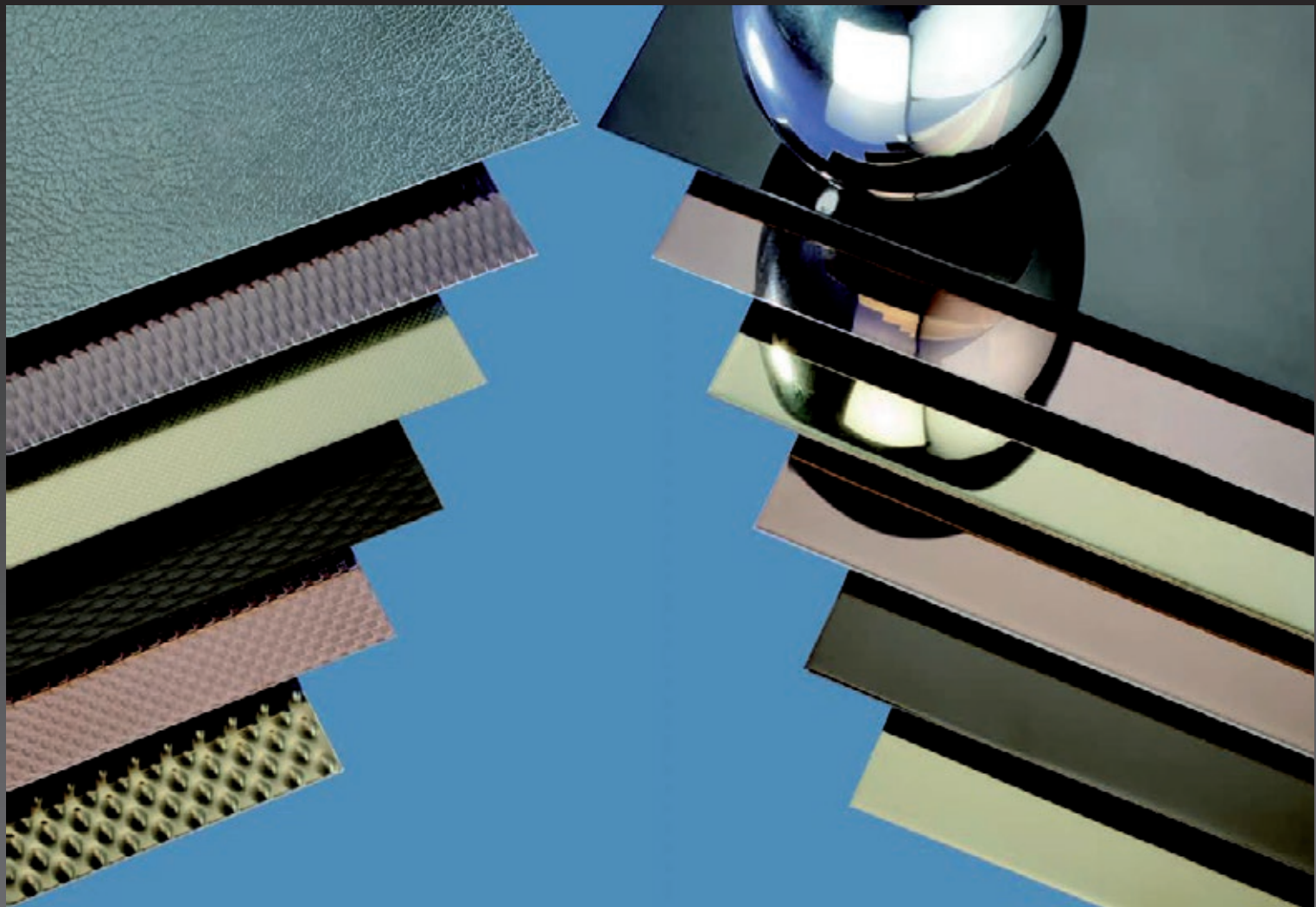


# ■ Edges/Profiles



Schmidt Edelstahl is able to give stainless steel sheets almost every shape technically possible.

Through partnerships with ultra-modern suppliers we are able to access machinery which can fulfil all your sheet processing needs. Whether edges up to 6000 mm, laser or water jet cutting, we offer everything in a single stop.





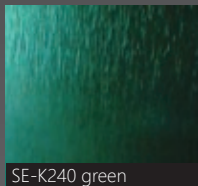
# ■ Coloured Stainless Steel

Schmidt Edelstahl offers colour-coated steel sheets with a variety of surfaces.

façades and metal construction, shopfitting, decorative interior design, lighting industry, etc.!

With the PVD/TiN process, stainless steel surfaces (such as glossy/mirror polished, sandblasted, drilled, pattern rolled, embossed surfaces) can be transformed into elegant colour sheets. This process allows extraordinary colours to be produced on the surface. The available applications are varied: Elevators,

- max. size **2000 x 6000 mm**
- thicknesses of **0.5-5.0 mm**
- colours: gold, champagne, bronze, copper & black  
(other colours available upon request)



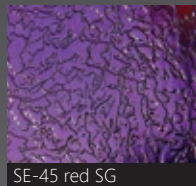
SE-K240 green



SE-23 blue



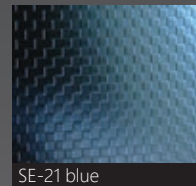
SE-KK10 anthracite



SE-45 red SG



SE-SWL champagne



SE-21 blue



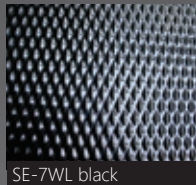
SE-6WL green SG



SE-25 blue



SE-22 bronze



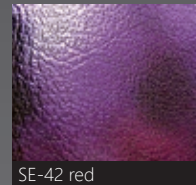
SE-7WL black



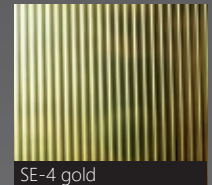
SE-K240 blue



SE-6WL gold



SE-42 red



SE-4 gold



# Your creativity

Are you searching to customise your project? We can work with you to develop your designs or just ask us to manufacture them according to your specifications. By grains of 40-1000 with roughness measurement and cross grinding up to 2000 mm, there are no limits to your creativity. We can also replicate existing grinding patterns and handle high unit weights of up to 10 tonnes.

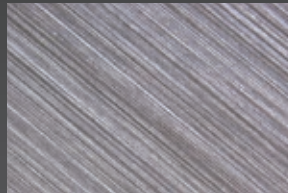
# ■ Special/design grinding



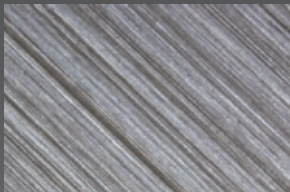
Decor 150: Nubs



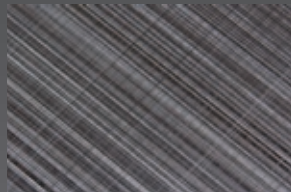
Decor 270: Angelhair



Decor 330: Hairline fine



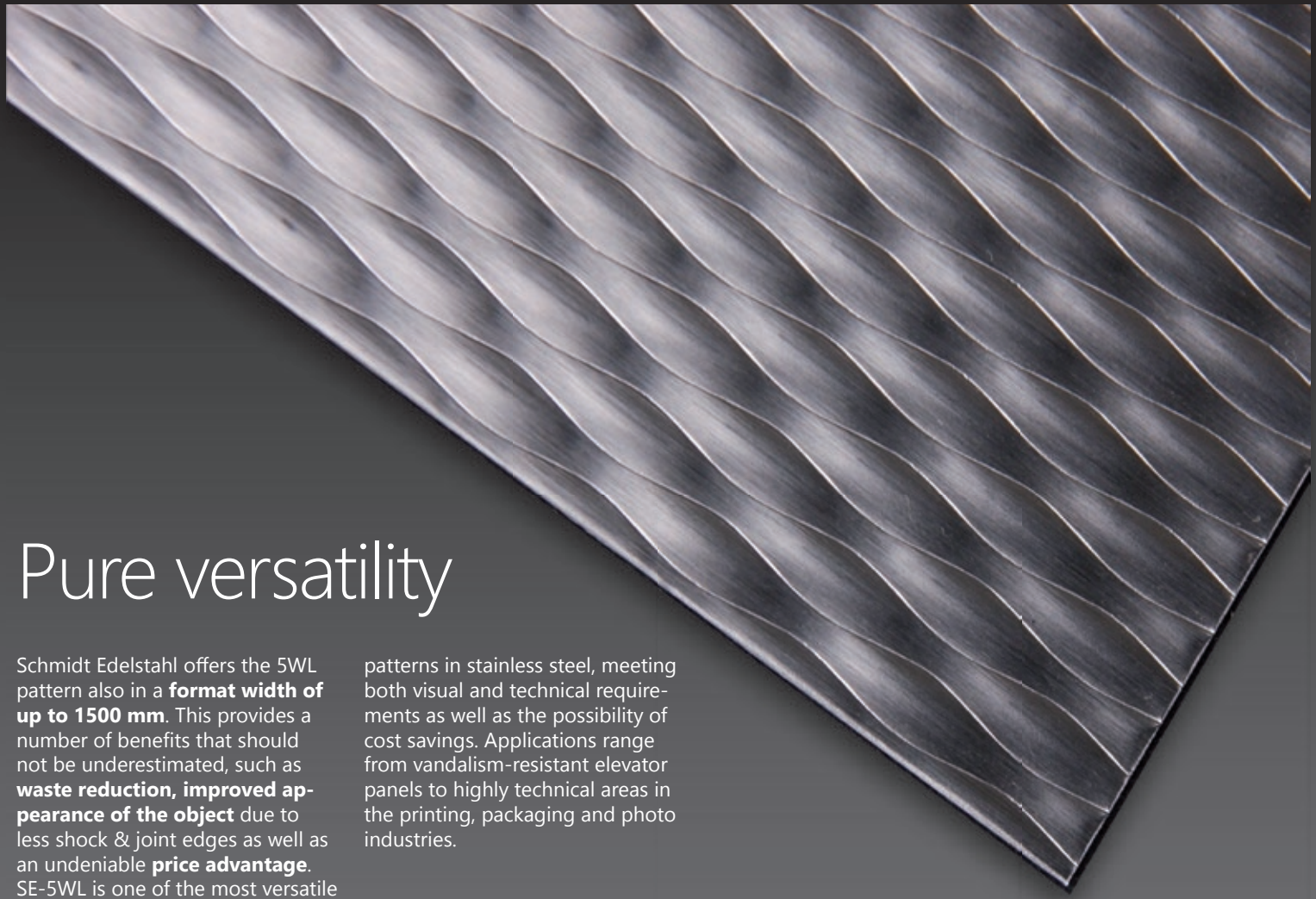
Decor 450: Hairline rough



Decor 500: Hairline cross

- grain 40-1000
- maximum width **2000 mm**
- unit weight up to 10 tonnes
- cross grinding up to 2000 mm





# Pure versatility

Schmidt Edelstahl offers the 5WL pattern also in a **format width of up to 1500 mm**. This provides a number of benefits that should not be underestimated, such as **waste reduction, improved appearance of the object** due to less shock & joint edges as well as an undeniable **price advantage**. SE-5WL is one of the most versatile

patterns in stainless steel, meeting both visual and technical requirements as well as the possibility of cost savings. Applications range from vandalism-resistant elevator panels to highly technical areas in the printing, packaging and photo industries.



# SE-5WL

Up to 1500 mm width & 6000 mm length

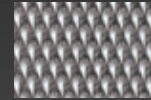
Formats	Thicknesses	W-No.	Surfaces
2000 x 1000 mm 2500 x 1250 mm 3000 x 1250 mm 3000 x 1500 mm Fixed lengths	0.5-2.0 mm	<ul style="list-style-type: none"> <li>• 1.4016</li> <li>• 1.4301</li> <li>• 1.4401</li> <li>• 1.4404</li> <li>• 1.4509</li> <li>• 1.4571</li> </ul>	<ul style="list-style-type: none"> <li>• 2R</li> <li>• 2B</li> <li>• brushed</li> <li>• R-tested <sup>(R13)</sup></li> <li>• el-pol</li> <li>• coloured</li> </ul>

Other finishes and sizes available on request.

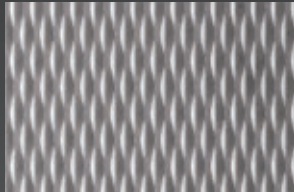
also available for



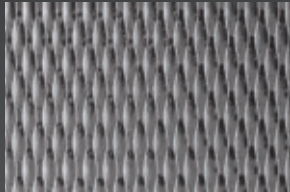
SE-6WL



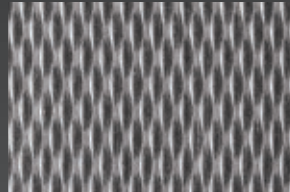
SE-7WL



Process: 2B



Process: 2R



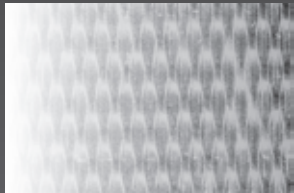
Process: 2B  
• brushed



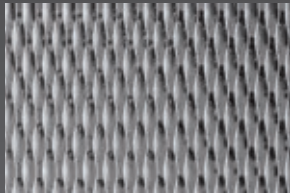
Process: 2B  
Surface: polished



Process: 636  
Surface: R13



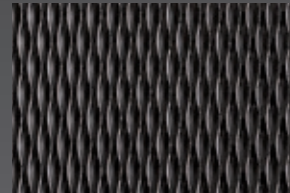
Process: 2B  
• el-pol



Process: 2R  
Surface: HP8



Process: 2B  
Surface: SF-Gold-VG



Process: 2B  
Surface: SF Black



Process: 2B  
Surface: SF Red RG

**Particularly suitable for:**

- Logistics technology
- Automotive industry
- Vehicle construction
- Machine panelling

- Façades
- Cold room floors
- Partition walls

**Benefits by:**

- lower adhesion than flow liners and sliding sheet
- greater stability and rigidity compared to flat sheets
- cost savings due to lower material thickness
- improved waste optimization



# The alternative

SE TB1 offers an excellent alternative to the already known aluminium sheet "Duet and Quintet", as well as to the textured stainless steel sheet. Whether as non-slip floor sheet with low rolling resistance, or as elegant wall panelling, the SE-TB1 has a wide range of applications.

The benefits of the SE-TB1 are

obvious. Even thin floor sheets are enormously resilient at low weights.

Thanks to our modern lateral slitting lines, we are able to deliver within a short time fixed lengths from coil or sheet material.

# SE-TB1

Formats	Thicknesses	W-No.	Surfaces
2500 x 1250 mm 3000 x 1250 mm 3000 x 1500 mm Coil 1250/1500 mm Fixed lengths	0.8-4.0 mm	<ul style="list-style-type: none"> <li>• 1.4301</li> <li>• 1.4404</li> </ul>	Certified Slip resistance <ul style="list-style-type: none"> <li>• R11 from coil</li> <li>• R12</li> <li>• el-pol &amp; colour possible</li> </ul>

Other finishes and sizes available on request.



Cold room floors in the gastronomy trade



Flooring and wall coverings in elevators



Slip-resistant in industrial areas



Low wear in public areas

- Particularly suitable for:**
- Industrial flooring
  - Stairs
  - Swimming pools
  - Machine panelling


- Wall cladding
- Trade fair construction
- Cold storage floors
- Stations & airports

**Benefits by:**

- non-slip surface (German certificate)
- greater stability and rigidity compared to smooth sheet

- lower rolling resistance
- weight reduction through lower material thickness
- less wear





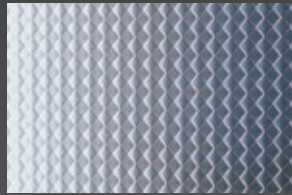
**Pattern:** SE-25 linen  
**Process:** 2R



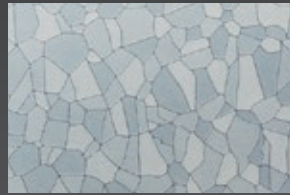
# ■ Pattern embossed sheets



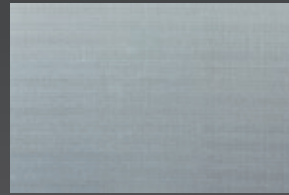
**Pattern:** SE-21 Square  
**Process:** 2R



**Pattern:** SE-22 Rhombus  
**Process:** 2R



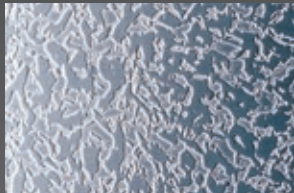
**Pattern:** SE-23 Austenite  
**Process:** 2R



**Pattern:** SE-24 Microlinen  
**Process:** 2R



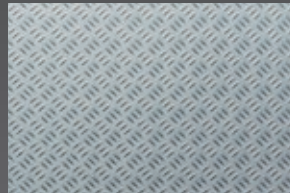
**Pattern:** SE-42 Leather grain  
**Process:** 2R



**Pattern:** SE-45 Ice flower  
**Process:** 2R



**Pattern:** SE-64 Haze  
**Process:** 2R



**Pattern:** SE-65 Microchecker  
**Process:** 2R



**Pattern:** SE-66 Waterfall  
**Process:** 2R



**Pattern:** SE-67 Triangle  
**Process:** 2R

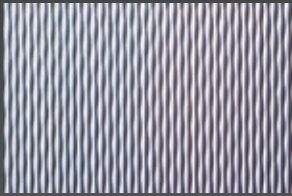


**Pattern:** SE-5WL

**Process:** 2R / 2B brushed



# ■ Pattern rolled sheets



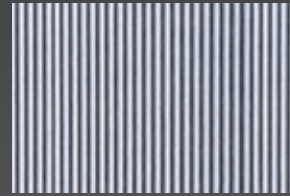
**Pattern:** SE-2  
**Process:** 2R / 2B brushed



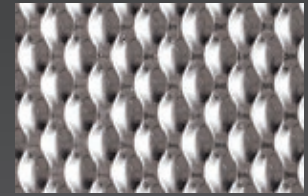
**Pattern:** SE-2FL  
**Process:** 2R / 2B brushed



**Pattern:** SE-3  
**Process:** 2R / 2B brushed



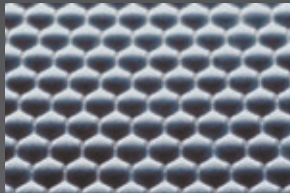
**Pattern:** SE-4  
**Process:** 2R / 2B brushed



**Pattern:** SE-6WL  
**Process:** 2R / 2B brushed



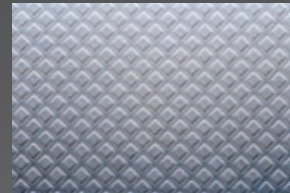
**Pattern:** SE-7WL  
**Process:** 2R / 2B brushed



**Pattern:** SE-8  
**Process:** 2R / 2B brushed



**Pattern:** SE-9  
**Process:** 2R / 2B brushed



**Pattern:** SE-10  
**Process:** 2R / 2B brushed



**Pattern:** SE-11  
**Process:** 2R / 2B brushed



**Pattern:** SE-KK 12  
**Process:** R12



# Anti-slip floor sheets



**Pattern:** SE-TB1  
**Slip resistance class:** R11



**Pattern:** SE-TB1 604  
**Slip resistance class:** R12



**Pattern:** SE-TB1 636  
**Slip resistance class:** R13



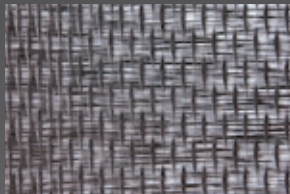
**Pattern:** SE-KK 12  
**Slip resistance class:** R12



**Pattern:** SE-KK 64  
**Slip resistance class:** R11



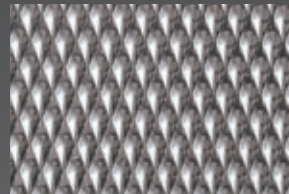
**Pattern:** SE-5WL 604  
**Barefoot area category:** C



**Pattern:** SE-5WL  
**Slip resistance class:** R11-R13



**Pattern:** SE-6WL  
**Slip resistance class:** R11-R13



**Pattern:** SE-7WL®  
**Slip resistance class:** R10-R13

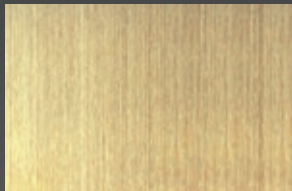


**Pattern:** SE-22R  
**Slip resistance class:** R11-R13

**Pattern:** SE-HP8  
**Process:** Mirror polished



# ■ Etched/Embossed design sheets



Pattern: SE-TG-HL



Pattern: SE-005GE-TG-HP8



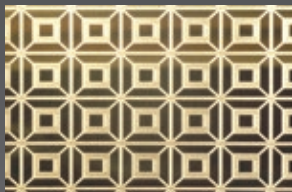
Pattern: SE-050GE-HP8



Pattern: SE-038GE-TG-HL



Pattern: SE-063GP-HP8-10/10



Pattern: SE-009GE-TG-HP8



Pattern: SE-GE-BB 1



Pattern: SE-GE-BB 2

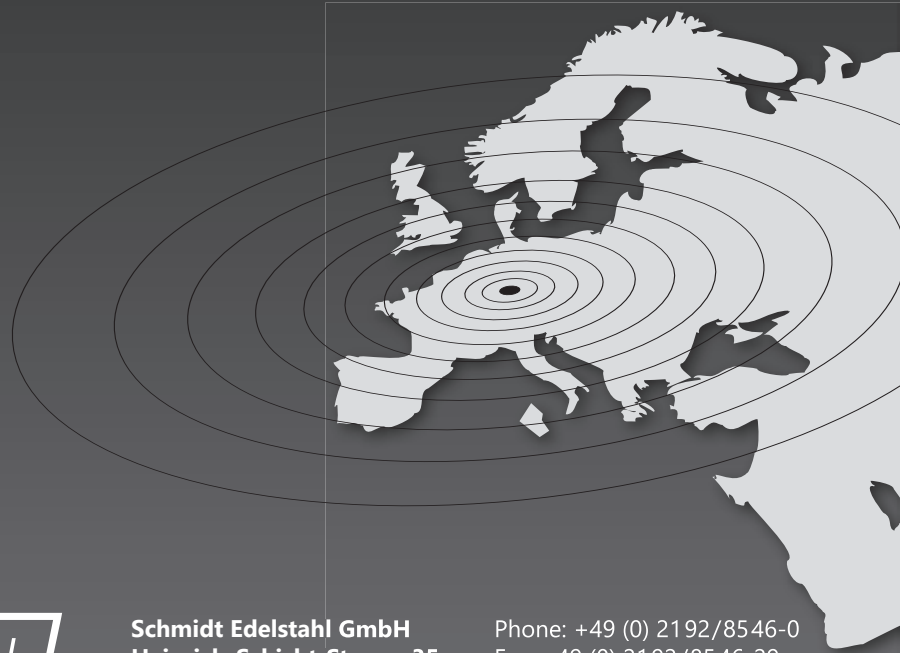


Pattern: SE-GE-BB 3



Pattern: SE-GE-BB 9

[www.schmidt-edelstahl.com](http://www.schmidt-edelstahl.com)



**SCHMIDT** EDELSTAHL  
GmbH

**Schmidt Edelstahl GmbH**  
**Heinrich-Schicht-Strasse 35**  
**D-42499 Hückeswagen**

Phone: +49 (0) 2192/8546-0  
Fax: +49 (0) 2192/8546-29  
Email: [info@schmidt-edelstahl.de](mailto:info@schmidt-edelstahl.de)